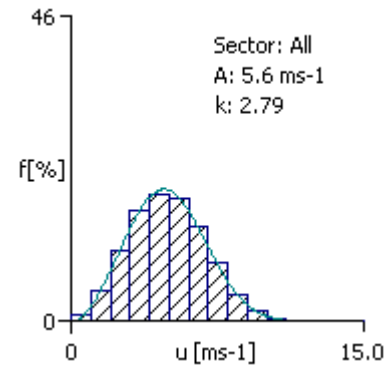
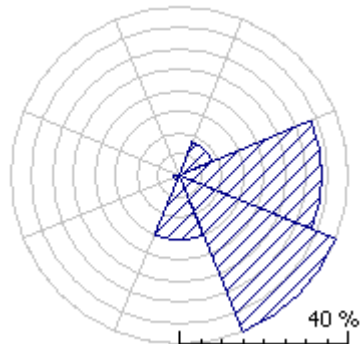


# SONDA Wind Database

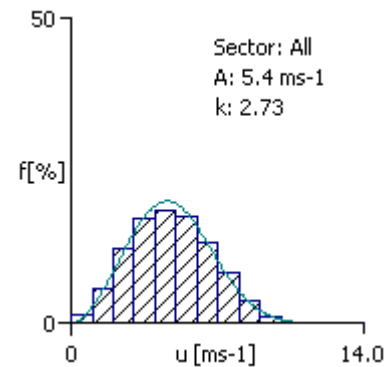
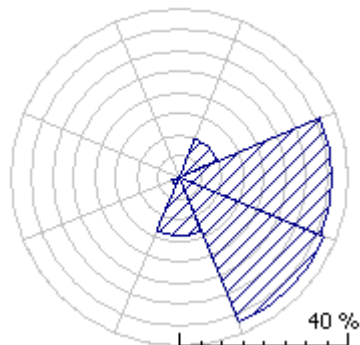
## ■ SONDA Stations location in Brazil





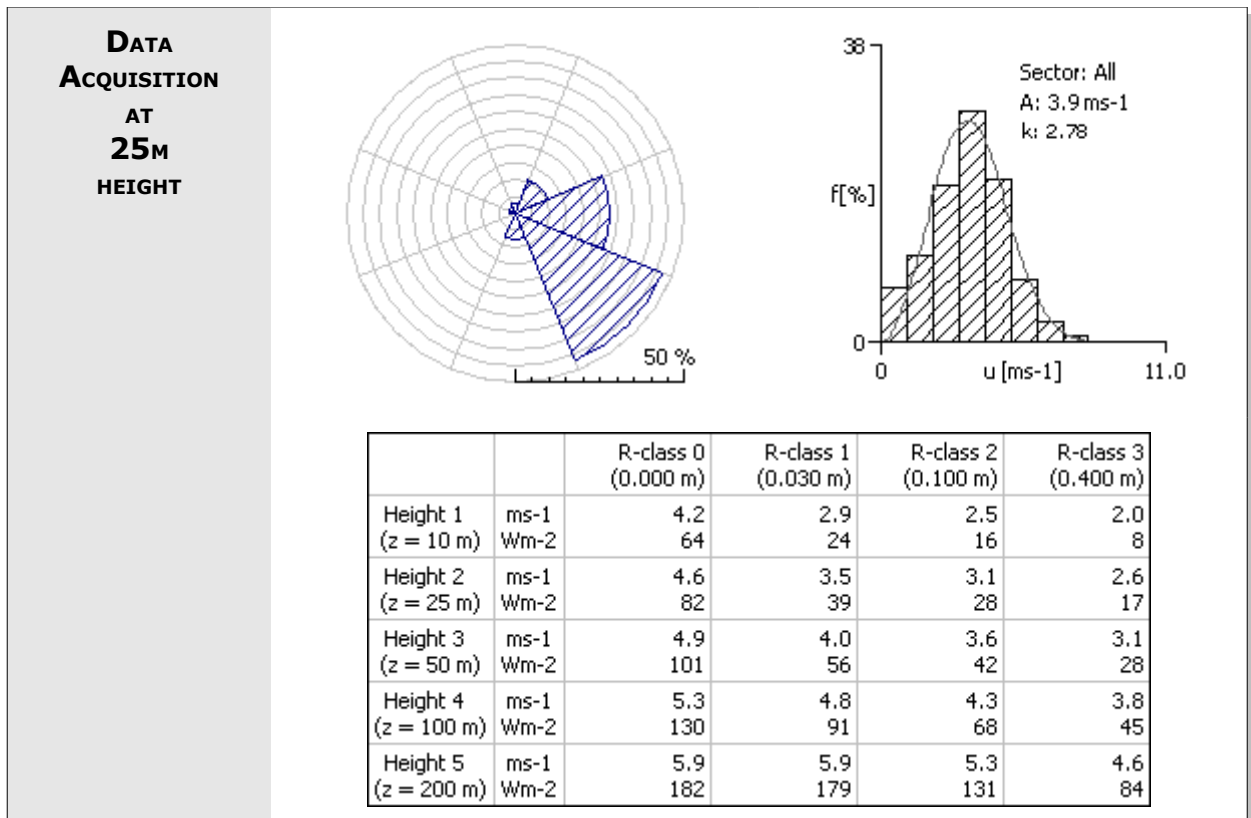
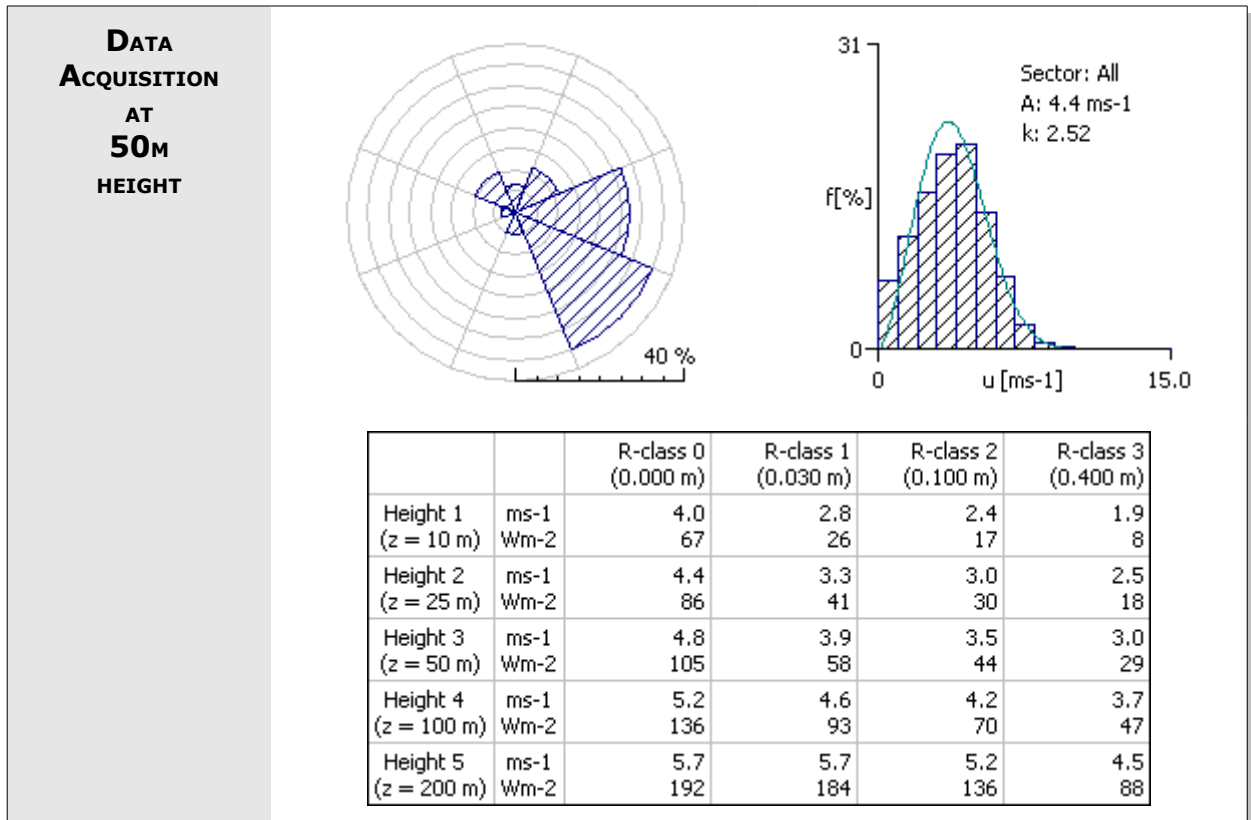
**BELO JARDIM STATION****LATITUDE:** -8.3675**LONGITUDE:** -36.4294**TIME PERIOD:** 06/2004 TO 09/2005**DATA  
ACQUISITION  
AT  
50M  
HEIGHT**

		R-class 0 (0.000 m)	R-class 1 (0.030 m)	R-class 2 (0.100 m)	R-class 3 (0.400 m)
Height 1 (z = 10 m)	ms-1	5.2	3.6	3.1	2.4
	Wm-2	133	48	31	15
Height 2 (z = 25 m)	ms-1	5.7	4.3	3.8	3.2
	Wm-2	171	77	56	33
Height 3 (z = 50 m)	ms-1	6.2	5.0	4.5	3.9
	Wm-2	209	111	84	54
Height 4 (z = 100 m)	ms-1	6.7	5.9	5.3	4.7
	Wm-2	271	179	134	88
Height 5 (z = 200 m)	ms-1	7.4	7.3	6.6	5.7
	Wm-2	379	352	258	164

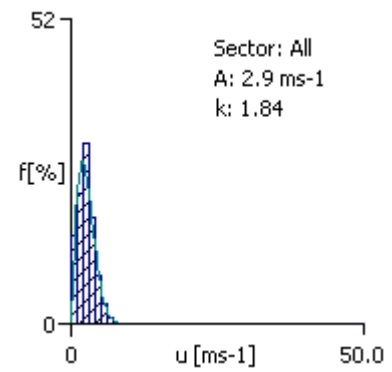
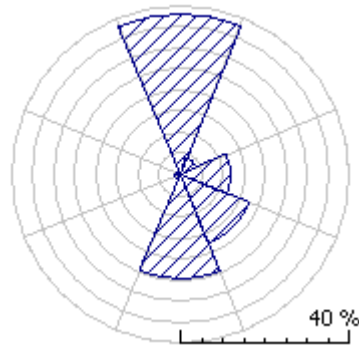
**DATA  
ACQUISITION  
AT  
25M  
HEIGHT**

		R-class 0 (0.000 m)	R-class 1 (0.030 m)	R-class 2 (0.100 m)	R-class 3 (0.400 m)
Height 1 (z = 10 m)	ms-1	5.9	4.0	3.5	2.7
	Wm-2	178	63	41	19
Height 2 (z = 25 m)	ms-1	6.4	4.8	4.3	3.6
	Wm-2	230	102	73	43
Height 3 (z = 50 m)	ms-1	6.9	5.6	5.0	4.3
	Wm-2	281	148	112	72
Height 4 (z = 100 m)	ms-1	7.5	6.6	6.0	5.2
	Wm-2	365	240	180	118
Height 5 (z = 200 m)	ms-1	8.3	8.2	7.4	6.4
	Wm-2	507	472	346	218

<b>BRASÍLIA STATION</b>	<b>LATITUDE:</b> -15.6008	<b>LONGITUDE:</b> -47.7130
	<b>TIME PERIOD:</b> 07,08,09/2004 AND 02 TO 12/2005	

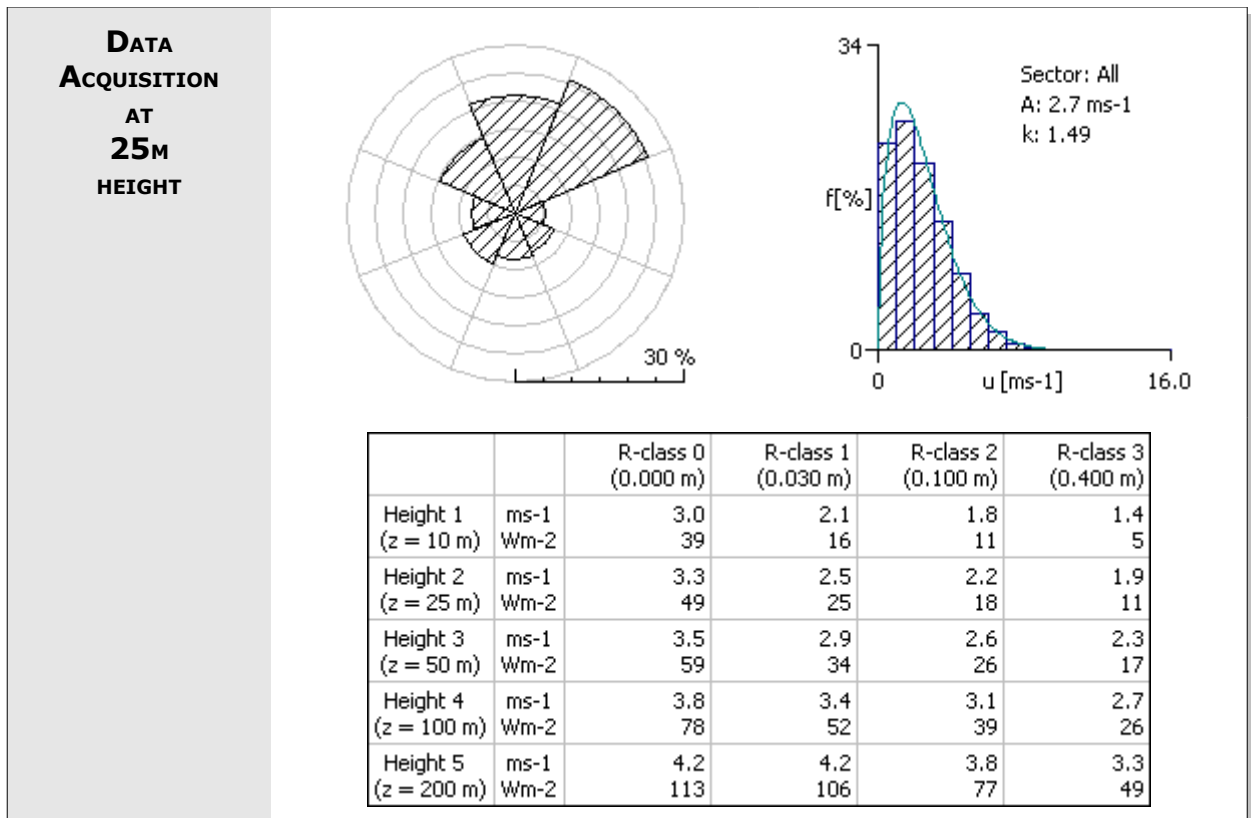
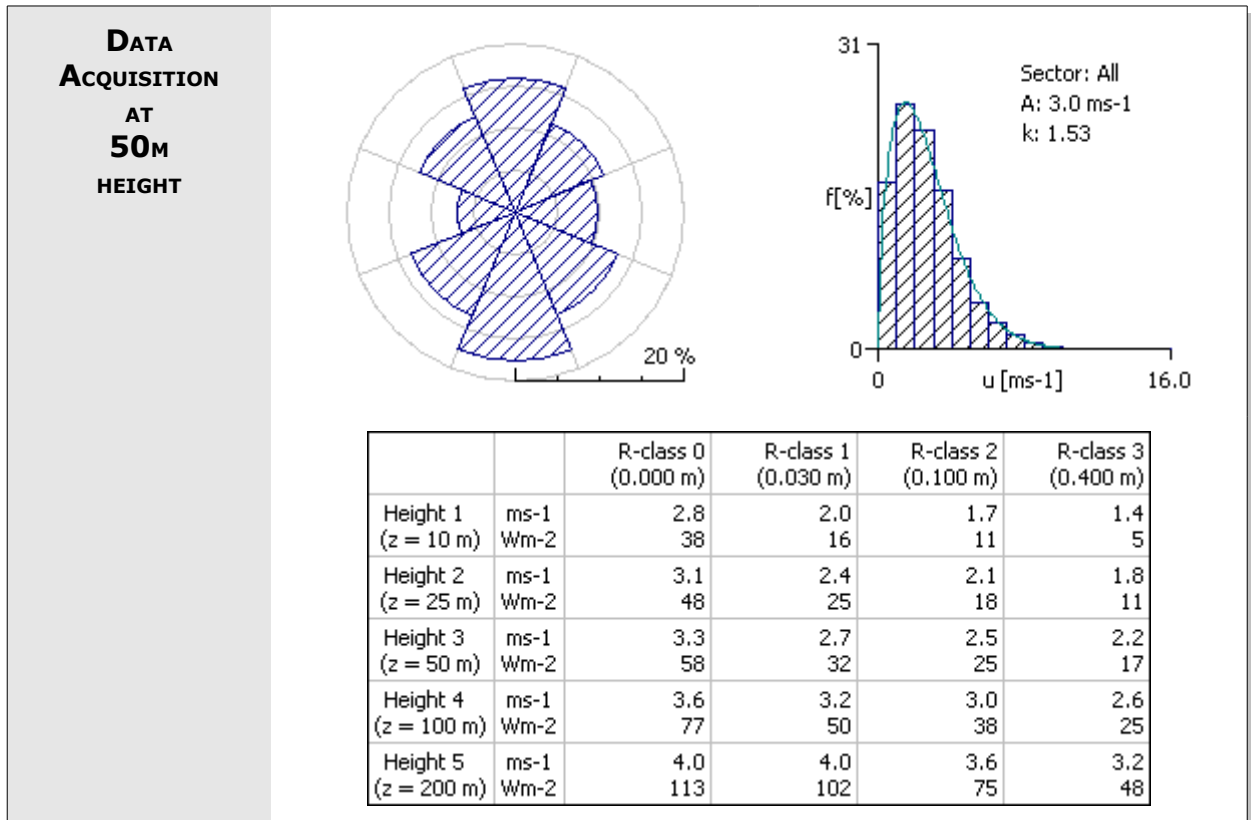


**DATA  
ACQUISITION  
AT  
10M  
HEIGHT**

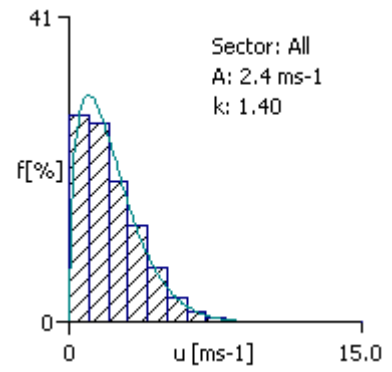
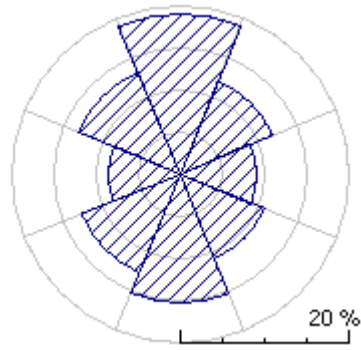


		R-class 0 (0.000 m)	R-class 1 (0.030 m)	R-class 2 (0.100 m)	R-class 3 (0.400 m)
Height 1 (z = 10 m)	ms-1 Wm-2	3.7 57	2.6 24	2.3 17	1.8 8
Height 2 (z = 25 m)	ms-1 Wm-2	4.1 74	3.1 38	2.8 29	2.3 17
Height 3 (z = 50 m)	ms-1 Wm-2	4.4 89	3.6 53	3.3 42	2.8 27
Height 4 (z = 100 m)	ms-1 Wm-2	4.8 117	4.3 85	4.0 66	3.4 43
Height 5 (z = 200 m)	ms-1 Wm-2	5.3 165	5.3 169	4.9 129	4.2 80

<b>OURO PRETO D'OESTE STATION</b>	<b>LATITUDE:</b> -10.8813	<b>LONGITUDE:</b> -61.9702
	<b>TIME PERIOD:</b> 03/2004 TO 09/2005	



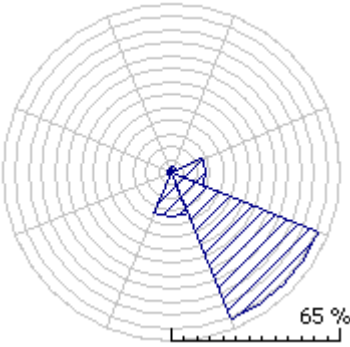
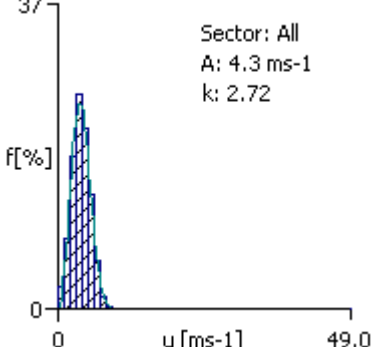
**DATA  
ACQUISITION  
AT  
10M  
HEIGHT**



		R-class 0 (0.000 m)	R-class 1 (0.030 m)	R-class 2 (0.100 m)	R-class 3 (0.400 m)
Height 1 (z = 10 m)	ms-1 Wm-2	3.2 48	2.2 19	1.9 13	1.5 6
Height 2 (z = 25 m)	ms-1 Wm-2	3.5 61	2.6 29	2.4 22	2.0 13
Height 3 (z = 50 m)	ms-1 Wm-2	3.8 73	3.1 40	2.8 32	2.4 21
Height 4 (z = 100 m)	ms-1 Wm-2	4.1 96	3.6 62	3.4 49	2.9 32
Height 5 (z = 200 m)	ms-1 Wm-2	4.5 139	4.5 126	4.1 96	3.6 60

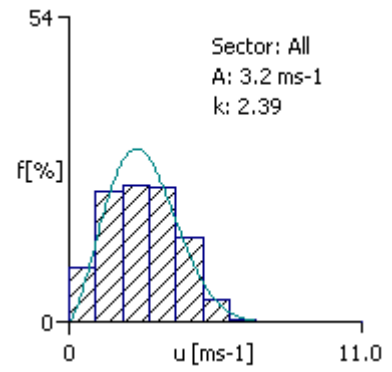
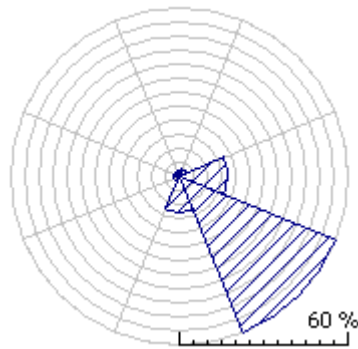
<b>PETROLINA STATION</b>	<b>LATITUDE:</b> -9.0688	<b>LONGITUDE:</b> -40.3197
	<b>TIME PERIOD:</b> 07/2004 TO 02/2006	

<b>DATA ACQUISITION AT 50M HEIGHT</b>	- IT WAS NOT INSERTED THEREFORE THE DATUM ARE SUSPICION OF BEING INCORRECT.
---------------------------------------	---

<b>DATA ACQUISITION AT 25M HEIGHT</b>	 																																																																		
	<table border="1"> <thead> <tr> <th></th> <th></th> <th>R-class 0 (0.000 m)</th> <th>R-class 1 (0.030 m)</th> <th>R-class 2 (0.100 m)</th> <th>R-class 3 (0.400 m)</th> </tr> </thead> <tbody> <tr> <td>Height 1 (z = 10 m)</td> <td>ms-1</td> <td>4.7</td> <td>3.2</td> <td>2.8</td> <td>2.2</td> </tr> <tr> <td></td> <td>Wm-2</td> <td>90</td> <td>32</td> <td>21</td> <td>10</td> </tr> <tr> <td>Height 2 (z = 25 m)</td> <td>ms-1</td> <td>5.1</td> <td>3.8</td> <td>3.4</td> <td>2.9</td> </tr> <tr> <td></td> <td>Wm-2</td> <td>116</td> <td>53</td> <td>38</td> <td>22</td> </tr> <tr> <td>Height 3 (z = 50 m)</td> <td>ms-1</td> <td>5.5</td> <td>4.4</td> <td>4.0</td> <td>3.5</td> </tr> <tr> <td></td> <td>Wm-2</td> <td>142</td> <td>76</td> <td>58</td> <td>37</td> </tr> <tr> <td>Height 4 (z = 100 m)</td> <td>ms-1</td> <td>6.0</td> <td>5.3</td> <td>4.8</td> <td>4.2</td> </tr> <tr> <td></td> <td>Wm-2</td> <td>184</td> <td>124</td> <td>93</td> <td>61</td> </tr> <tr> <td>Height 5 (z = 200 m)</td> <td>ms-1</td> <td>6.6</td> <td>6.5</td> <td>5.9</td> <td>5.1</td> </tr> <tr> <td></td> <td>Wm-2</td> <td>255</td> <td>243</td> <td>179</td> <td>114</td> </tr> </tbody> </table>			R-class 0 (0.000 m)	R-class 1 (0.030 m)	R-class 2 (0.100 m)	R-class 3 (0.400 m)	Height 1 (z = 10 m)	ms-1	4.7	3.2	2.8	2.2		Wm-2	90	32	21	10	Height 2 (z = 25 m)	ms-1	5.1	3.8	3.4	2.9		Wm-2	116	53	38	22	Height 3 (z = 50 m)	ms-1	5.5	4.4	4.0	3.5		Wm-2	142	76	58	37	Height 4 (z = 100 m)	ms-1	6.0	5.3	4.8	4.2		Wm-2	184	124	93	61	Height 5 (z = 200 m)	ms-1	6.6	6.5	5.9	5.1		Wm-2	255	243	179	114
		R-class 0 (0.000 m)	R-class 1 (0.030 m)	R-class 2 (0.100 m)	R-class 3 (0.400 m)																																																														
Height 1 (z = 10 m)	ms-1	4.7	3.2	2.8	2.2																																																														
	Wm-2	90	32	21	10																																																														
Height 2 (z = 25 m)	ms-1	5.1	3.8	3.4	2.9																																																														
	Wm-2	116	53	38	22																																																														
Height 3 (z = 50 m)	ms-1	5.5	4.4	4.0	3.5																																																														
	Wm-2	142	76	58	37																																																														
Height 4 (z = 100 m)	ms-1	6.0	5.3	4.8	4.2																																																														
	Wm-2	184	124	93	61																																																														
Height 5 (z = 200 m)	ms-1	6.6	6.5	5.9	5.1																																																														
	Wm-2	255	243	179	114																																																														

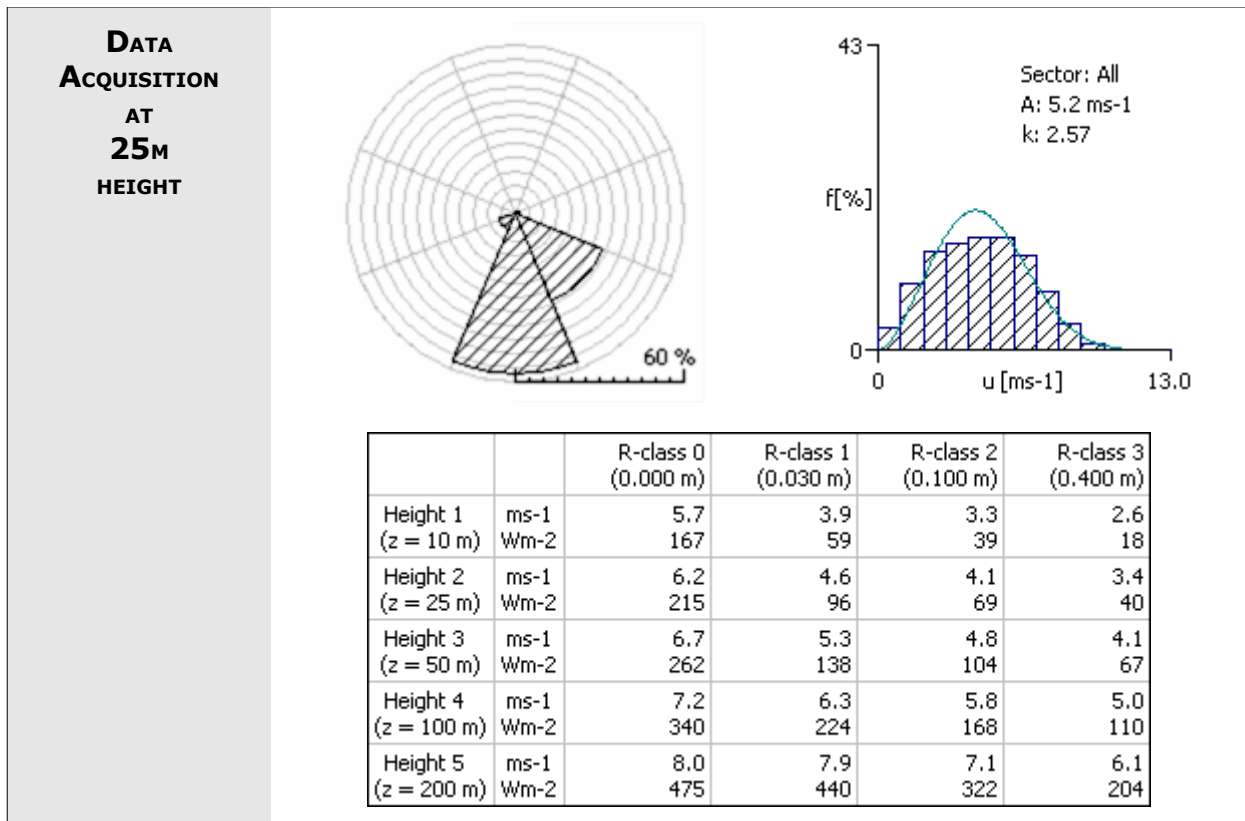
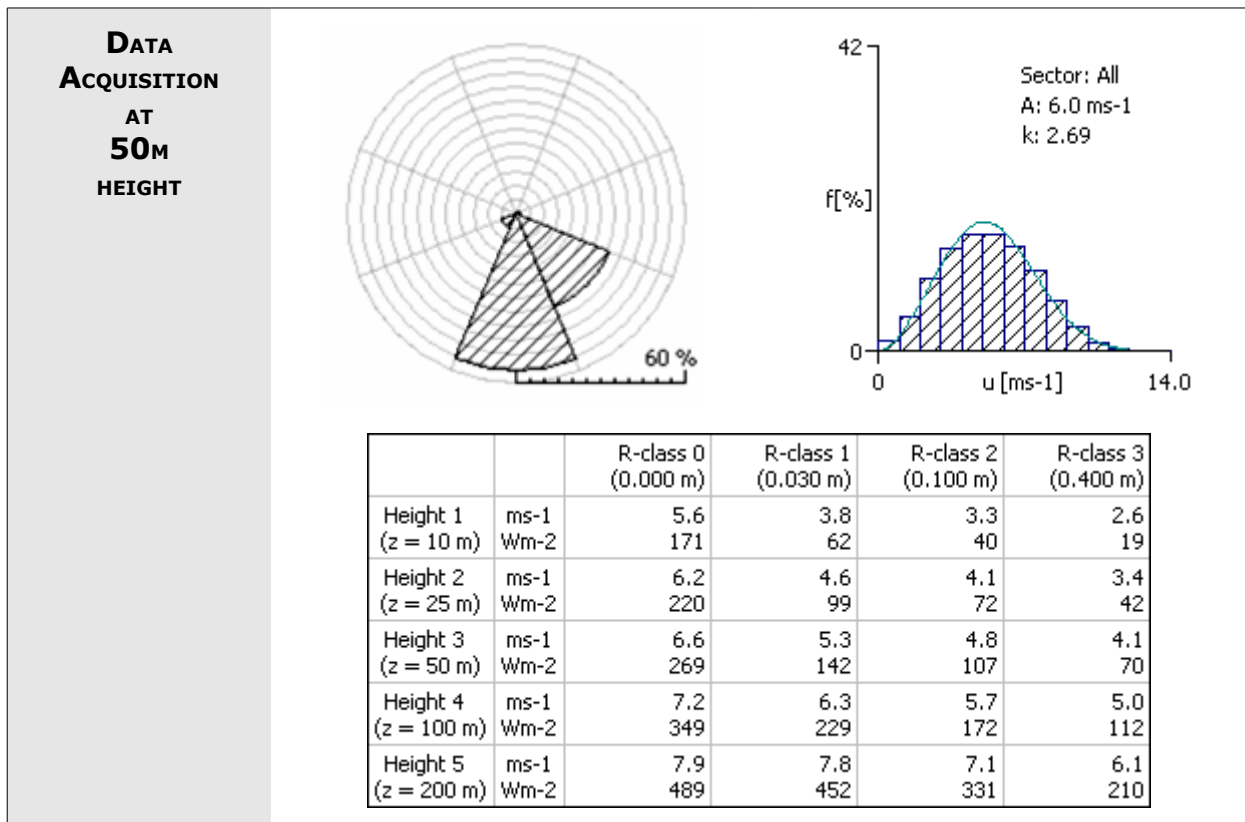


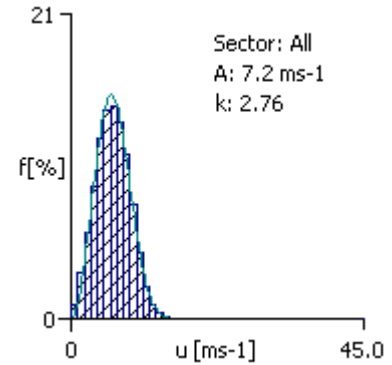
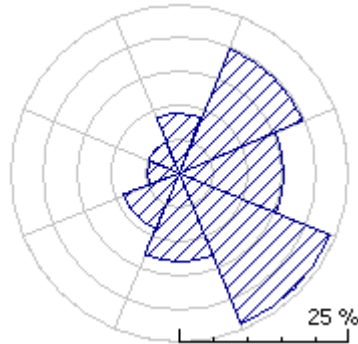
**DATA  
ACQUISITION  
AT  
10M  
HEIGHT**



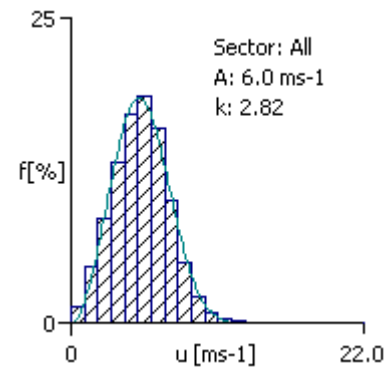
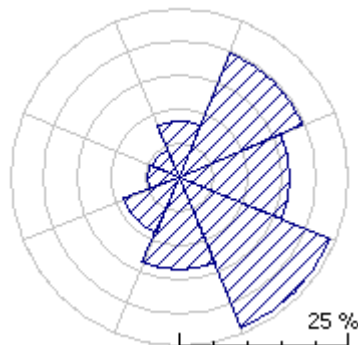
		R-class 0 (0.000 m)	R-class 1 (0.030 m)	R-class 2 (0.100 m)	R-class 3 (0.400 m)
Height 1 (z = 10 m)	ms-1 Wm-2	4.1 64	2.8 22	2.4 15	1.9 7
Height 2 (z = 25 m)	ms-1 Wm-2	4.5 82	3.3 36	3.0 27	2.5 16
Height 3 (z = 50 m)	ms-1 Wm-2	4.8 101	3.9 53	3.5 41	3.0 27
Height 4 (z = 100 m)	ms-1 Wm-2	5.2 130	4.6 85	4.2 67	3.7 44
Height 5 (z = 200 m)	ms-1 Wm-2	5.8 181	5.7 168	5.2 128	4.5 82

<b>SÃO JOÃO DO CARIRI</b> STATION	<b>LATITUDE:</b> -7.3816	<b>LONGITUDE:</b> -36.5272
	<b>TIME PERIOD:</b> 06/2004 TO 09/2005	



**SÃO MARTINHO DA  
SERRA STATION****LATITUDE:** -29.4427**LONGITUDE:** -53.8230**TIME PERIOD:** 08/2004 TO 08/2006**DATA  
ACQUISITION  
AT  
50M  
HEIGHT**

		R-class 0 (0.000 m)	R-class 1 (0.030 m)	R-class 2 (0.100 m)	R-class 3 (0.400 m)
Height 1 (z = 10 m)	ms-1	6.8	4.7	4.1	3.2
	Wm-2	282	104	69	33
Height 2 (z = 25 m)	ms-1	7.4	5.6	5.0	4.2
	Wm-2	364	170	123	73
Height 3 (z = 50 m)	ms-1	7.9	6.5	5.9	5.1
	Wm-2	445	245	187	122
Height 4 (z = 100 m)	ms-1	8.6	7.7	7.0	6.1
	Wm-2	577	397	302	200
Height 5 (z = 200 m)	ms-1	9.5	9.6	8.7	7.5
	Wm-2	804	782	579	371

**DATA  
ACQUISITION  
AT  
25M  
HEIGHT**

		R-class 0 (0.000 m)	R-class 1 (0.030 m)	R-class 2 (0.100 m)	R-class 3 (0.400 m)
Height 1 (z = 10 m)	ms-1	6.4	4.4	3.8	3.0
	Wm-2	223	82	54	26
Height 2 (z = 25 m)	ms-1	7.0	5.3	4.7	4.0
	Wm-2	288	134	98	58
Height 3 (z = 50 m)	ms-1	7.5	6.1	5.5	4.8
	Wm-2	353	194	149	98
Height 4 (z = 100 m)	ms-1	8.1	7.2	6.6	5.8
	Wm-2	457	316	241	161
Height 5 (z = 200 m)	ms-1	9.0	9.0	8.2	7.1
	Wm-2	635	621	462	298

<b>TRIUNFO STATION</b>	<b>LATITUDE:</b> -7.8272	<b>LONGITUDE:</b> -38.122
	<b>TIME PERIOD:</b> 06/2004 TO 09/2005	

